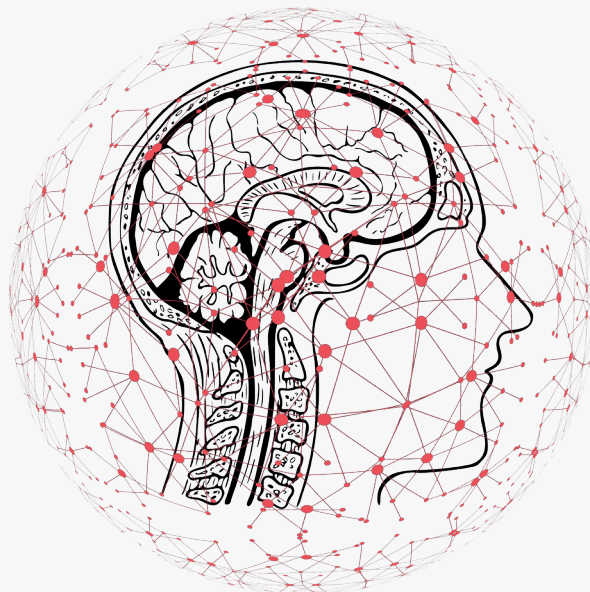


Summer Institute for Computational Social Science

Bamberg Graduate School of Social Sciences



Programme Booklet

28 July - 09 August 2019 BAMBERG

SICSS BAMBERG

financed by

BAMBERG
GRADUATE SCHOOL
OF SOCIAL SCIENCES



ALFRED P. SLOAN
FOUNDATION



Content

Welcome to SICSS.....	3
About the Organizers.....	4
Comprehensive Time Schedule	5
About the Speakers.....	7
Hosting SICSS.....	10
Time Schedule.....	11
Participant List.....	19
BAGSS	21
General Information.....	23
Impressum	25

Welcome to SICSS Bamberg 2019

A very warm welcome to you! We are excited to host the first SICSS Event in Bamberg and wish you a productive and enjoyable stay! Throughout the summer institute, you will be able to meet and get in touch with interesting new and already well-known people.

Our programme includes lectures and group problem sets in the first week, followed by participant guided research projects in the second week. You will be able to work in teams to learn how to apply the material from the lectures. Topics covered include ethics, web scraping and digital trace data collection, automated text analysis, network analysis, digital field experiments and surveys in the digital age. There will be ample opportunity for students to discuss their ideas and research with the organizers, other participants and guest speakers. One of our goals is to build and expand the Computational Social Scientists Network among our participants in Germany and abroad.

Otto-Friedrich University is a medium-sized University with a sharp profile in social and economic science, as well as human sciences, complemented by application oriented computer science. Interdisciplinary research activity and a variety of combinable courses of study contribute to the scientific landscape of Germany. Research and teaching constitute one entity for the University. Service facilities and administration support innovation and efficiency.

Research strength manifests both in outstanding individual projects and in larger research alliances. The university is committed to quality in teaching and sees its good rankings as an incentive on this path.

We hope that within the framework of the SICSS you will not only be able to expand your knowledge, but also get to know Bamberg as a great vacation spot. We warmly invite you to take advantage of the cultural offer of the city of Bamberg.

Outside the university life, Bamberg is steeped in history, which is one reason why it was declared a World Heritage Site in 1993. A special feature of Bamberg's urban design is the way in which the present town illustrates the link between agriculture (market gardens and vineyards) and the municipal distribution center. Known philosophers and writers such as Hegel and E.T.A. Hoffmann lived and worked here. Today, the city is particularly popular for its many breweries and the wonderful view of the Regnitz and the area known as "Little Venice".

We are very much looking forward to working with you and wish all participants a great and productive time.

Thomas Saalfeld,
Julian Hohner and
Carsten Schwemmer

About the Organizers



Carsten Schwemmer

Carsten Schwemmer is currently finishing a PhD in Sociology at Bamberg University, Germany. His research focuses on computational methods for the study of ethnic minorities and social media communication. Carsten is particularly interested in natural language processing, data mining and software development. He taught courses on computational social science at University of Bamberg, University of Constance and Humboldt University of Berlin.



Julian Hohner

Julian Hohner currently strives to start a PhD in Political Science at Bamberg University. He is also part of the Management of the Bamberg Graduate School of Social Sciences and is particularly interested in machine learning, quantitative text analysis, inferential statistics as well as populist, party and governmental behaviour studies. Moreover, Julian is participating as Teaching Assistant in the ECPR Winter/Summer Schools on a regular basis.



Thomas Saalfeld

Thomas Saalfeld is Professor of Political Science at the University of Bamberg and Director of the Bamberg Graduate School of Social Sciences. Prior to joining Bamberg in 2009, he held research and teaching positions at the Universities of the German Federal Armed Forces Munich, Dresden, Kent and Bamberg. He was a Member of the Council of the German Political Science Association from 2015 to 2016 and joined the Executive Committee of the European Consortium for Political Research (ECPR) in 2018. Since 2015, he has been the local organizer of the ECPR Winter School in Methods and Techniques. He has a particular interest in text-as-data applied to legislative studies.

Time Schedule

Comprehensive Time Schedule

Week 1

Sunday, 28 July: Opening Dinner 19.00 at BAGSS

Monday, 29 July: Introduction to Ethics

Guest Speaker: Dr. Andreas Jungherr

Tuesday, 30 July: Collecting Digital Trace Data

Wednesday, 31 July: Social Network Analysis

Guest Lecturer: Dr. Oliver Posegga

Guest Speaker: Dr. Faribi Karimi

Thursday, 01 August: Automated Text Analysis

Friday, 02 August: Surveys in the Digital Age

Guest Speaker: Dr. Ridhi Kashyap

Saturday, 03 August: Experiments

Sunday, 04 August: Day Off!

Time Schedule

Comprehensive Time Schedule

Week 2

Monday, 05 August: Work on Group Projects

Guest Lecture: Dr. Martijn Schoonvelde

Tuesday, 06 August: Work on Group Projects

Guest Lecture: Dr. Milena Tsvetkova

Wednesday, 07 August: Work on Group Projects

Thursday, 08 August: Presenting Group Projects

Closing Dinner

Friday, 09 August: Participants' Departure

About the Speakers

About the Speakers

Milena Tsvetkova



Milena Tsvetkova is Assistant Professor at the Department of Methodology at the London School of Economics and Political Science. Prior to that, she was a Postdoctoral Researcher in Computational Social Science at the Oxford Internet Institute at the University of Oxford. She holds a PhD in Sociology from Cornell University, where she worked with Michael Macy. Her interests reside in the field of computational social science. In her research, she uses large-scale web-based social interaction experiments, network analysis of online data, and agent-based modeling to investigate fundamental social phenomena such as cooperation, social contagion, segregation and inequality.

Andreas Jungherr



Andreas Jungherr is a Juniorprofessor (Assistant Professor) for Social Science Data Collection and Analysis at the University of Konstanz. He studies the impact of digital media on politics and society. He has worked on the uses of digital media and technology by publics, political actors, and organizations in international comparison. He also addresses challenges for scientific research in reaction to digital change in order to realize opportunities emerging from new data sources and analytical approaches. In this, he has focused on harnessing the potential of digital methods and computational social science while addressing methodological challenges in its integration into the social sciences. Depending on the object under study, he also uses traditional quantitative and qualitative empirical approaches. Currently, he is lead investigator of 'Communicative Power in Hybrid Media Systems', a project financed by the Volkswagen Stiftung (2017-2020). The interdisciplinary project, featuring computer and information scientists, focuses on the interconnection between political coverage in legacy, online media and political talk on online platforms in Germany, UK, USA, and South Korea.

About the Speakers

About the Speakers

Oliver Posegga



Oliver Posegga is an Assistant Professor at the Department of Information Systems and Social Networks at the University of Bamberg, an affiliate of the Center for Collective Intelligence at the MIT Sloan School of Management and a principal investigator of the project ‘Communicative Power in Hybrid Media Systems’, funded by the Volkswagen Foundation. His research focuses on understanding the collective dynamics of digitally enabled networks, such as collective behavior and intelligence in organizational and societal settings, and touches a variety of topics, such as the dynamics of social networks, crisis management, crowdsourcing, data- and information quality, and discursive power in contemporary media systems.

Ridhi Kashyap



Ridhi Kashyap is Associate Professor of Social Demography and fellow of Nuffield College at the University of Oxford. She completed her DPhil in Sociology jointly affiliated with the University of Oxford and Max Planck Institute for Demographic Research. Her research spans a number of substantive areas in demography and sociology, including gender, mortality and health, the diversification of family forms, ethnicity and migration. Her work has sought to adopt computational innovations both in terms of modelling approaches, such as agent-based models and digital trace data from web and social media platforms to study social and demographic processes. She is currently leading a Data2X and UN Foundation supported project that uses big data from the web, in particular large-scale online advertising data that provide information on the aggregate numbers of users of online platforms by demographic characteristics, to measure sustainable development and gender inequality indicators.

About the Speakers

About the Speakers

Fariba Karimi



Fariba Karimi is a researcher at the Department of Computational Social Science at GESIS – Leibniz Institute for the Social Sciences. She received her PhD in Physics with specialization in network science. Her current research focuses on computational approaches for addressing societal challenges such as gender inequality, bias in algorithms and sampling hard-to-reach groups and minorities. Her main expertise is analyzing large-scale socio-technical systems using network theory and data analysis.

Martijn Schoonvelde



Martijn Schoonvelde is an Assistant Professor in Political Science at University College Dublin. Prior to that, he was a Postdoctoral Fellow at the Vrije Universiteit Amsterdam as well as the University of Exeter and a Max Weber Fellow at the European University Institute in Florence. In his work, he analyzes the rhetoric of politicians. Is this rhetoric driven by strategy, ideology or aspects of their personality? Do they shift blame to others when topics are sensitive with the public? And when do they use emotional appeals? More broadly, his interests include political communication, EU politics, computational social science and text as data.

Want to host your own SICSS Event?



You can host a partner location of the Summer Institutes of Computational Social Science (SICSS) at your university, company, NGO, or government agency. For universities, SICSS provides an exciting approach to training and building interdisciplinary community. For companies, NGOs, and government agencies, hosting a partner location enables building connections with the academic community, providing training for current employees, and recruiting future employees.

Starting in 2018, the Summer Institutes in Computational Social Science (SICSS) began including partner locations in order to increase the number of participants. The Summer Institute is two weeks long and partner locations typically involve:

- 1) live-streamed lectures on topics ranging from automated text analysis to ethics;
- 2) training exercises to reinforce key ideas from lectures;
- 3) live-streamed research talks from leaders in the field and
- 4) participant-led group research projects.

This model has been used successfully at universities and companies around the world.

The Summer Institutes are highly modular and the open source curriculum can be adapted to the skills and interests at each location. The minimum budget to support a partner location is about \$10,000 to \$20,000 and depends on local conditions. If you have more questions about budgeting—or grants that may be available to support partner locations—please contact us at [rsfcompsocsci\[at\]gmail\[dot\]com](mailto:rsfcompsocsci[at]gmail[dot]com).

In order to ensure quality and consistency, all partner locations must have a former participant of SICSS as one of the local organizers. If you don't have any SICSS alumni at your organization, you can contact us about finding a former participant that could collaborate with you.

Time Schedule

Introduction to Ethics - Monday 29.07

9.00 - 9.15 Logistics

9.15 - 9.30 Introductions

9.30 - 10.00 Introduction to computational social science

10.00 - 10.30 Why SICSS?

10.30 - 10.45 Coffee Break

10.45 - 11.30 Ethics: Principles-based approach

11.30 - 12.15 Four areas of difficulty: informed consent, informational risk, privacy, and making decisions in the face of uncertainty

12.15 - 12.30 Introduction to the group exercise

12.30 - 1.30 Lunch

1.30 - 3.45 Group exercise

3.45 - 4.00 Break

4.00 - 5.30 Guest speaker:

Andreas Jungherr

Normalizing Digital Trace Data: Why we must break with supposed exceptionalism in the work with digital trace data

Social scientists have found themselves confronting a massive increase in available data sources. In the debates on how to use these new data, the research potential of “digital trace data” has featured prominently.

While various commentators expect digital trace data to create a “measurement revolution”, empirical work has fallen somewhat short of these grand expectations. In fact, empirical research based on digital trace data is largely limited by the prevalence of two central fallacies: First, the $n=all$ fallacy; second, the mirror fallacy. These fallacies can be addressed by developing a measurement theory for the use of digital trace data.

Time Schedule

Collecting Digital Trace Data - Tuesday 30.07

9.00 - 9.15 Logistics

4.00 - 5.30 Guest speaker: Video
from SICSS Princeton

9.15 - 9.30 What is digital trace data?

9.30 - 9.45 Strengths and weakness
of digital trace data

9.45 - 10.30 Screen-Scraping

10.30 - 10.45 Coffee Break

10.45 - 11.45 Application
Programming Interfaces

11.45 - 12.30 Building Apps and Bots
for Social Science Research

12.30 - 1.30 Lunch

1.30 - 3.45 Group Exercise

3.45 - 4.00 Break

**08.00 - 12.00 Office and Consultation
Hour: Andreas Jungherr**

**Contact the Speaker or the Organizer
for a specific time frame.**

Time Schedule

Social Network Analysis - Wednesday 31.07

9.00 - 9.15 Logistics

9.15 - 9.30 Network Analysis:
Then and Now

9.30 - 10.00 The Fundamentals of
Network Analysis

10.30 - 10.45 Plotting Networks

10.30 - 10.45 Coffee Break

10.45 - 11.45 Node and Network Level
Measures

11.45 - 12.30 Exploring Network
Properties

12.30 - 1.30 Lunch

1.30 - 3.45 Group Exercise

3.45 - 4.00 Break

**01.00 - 04.00: Office and Consultation
Hour: Oliver Posegga**

**Contact the Speaker or the Organizer
for a specific time frame.**

4.00 - 5.30 Guest speaker:

Fariba Karimi

Application of Network Analysis on Addressing Societal Challenges

Social network analysis (SNA) allow us to study associations between individuals, groups, and organizations and gain insights on how macro-level phenomena such as information diffusion, emergence of inequality and biases emerge as a result of micro-level interactions.

In this lecture, fundamental components of SNA, such as edge formation mechanisms, centrality measures, sampling techniques, community detection and information propagation will be introduced. Furthermore, there will be a present application of SNA on addressing social science questions.

Time Schedule

Automated Text Analysis - Thursday 01.08

9.00 - 9.15 Logistics

4.00 - 5.30 Guest speaker: Video
from SICSS Princeton

9.15 - 9.30 History of quantitative
text analysis

9.30 - 10.00 Basic Text Analysis/
GREP

10.00 - 10.30 Dictionary-Based Text
Analysis

10.30 - 10.45 Coffee Break

10.45 - 11.30 Supervised models

11.30 - 12.30 Topic models/
Structural Topic Models

12.30 - 1.30 Lunch

1.30 - 3.45 Group Exercise

3.45 - 4.00 Break

**9.00 - 12.00: Office and Consultation
Hour: Fariba Karimi**

**Contact the Speaker or the Organizer
for a specific time frame.**

Time Schedule

Surveys in the Digital Age - Friday 02.08

9.00 - 9.15 Logistics

9.15 - 9.45 Survey research in the digital age

9.45 - 10.15 Probability and non-probability sampling

10.15 - 10.30 Coffee break

10.30 - 11.00 Computer-administered interviews and wiki surveys

11.00 - 11.30 Combining surveys and big data

11.30 - 12.00 Group exercise introduction

12.00 - 12.30 Begin group exercise

12.30 - 1.30 Lunch

1.30 - 3.15 Continue group exercise

3.15 - 3.45 Discuss activity and open-source data

3.45 - 4.00 Break

14.00 - 16.00: Office and Consultation Hour: Ridhi Kashyap

Contact the Speaker or the Organizer for a specific time frame.

4.00 - 5.30 Guest speaker:

Ridhi Kashyap

Measuring Global Gender Inequality Indicators using Large-Scale Online Advertising Data

The United Nations Sustainable Development Goals (SDGs) are a key instrument in setting the agenda around global development until 2030. Although the SDGs come with several indicators against which countries ought to measure their progress, existing data sources to measure this progress, especially in relation to gender equality, are often (i) outdated, (ii) lacking international comparability, (iii) lacking appropriate disaggregation, or (iv) missing completely.

This talk will describe how anonymous, aggregate data from online platforms can be leveraged and combined with conventional data sources from surveys to measure and 'nowcast' gender inequality indicators globally. I will illustrate the process of using and validating such non-representative data to measure global gender gaps in: i) internet and mobile phone use, ii) post-secondary education, iii) skilled occupations.

Time Schedule

Experiments - Saturday 03.08

9.00 - 9.15 Logistics

9.15 - 9.30 What, why, and which experiments?

9.30 - 9.45 Moving beyond simple experiments

9.45 - 10.15 Four strategies for experiments

10.15 - 10.30 Coffee break

10.30 - 11.00 Zero variable cost data and musiclab

11.00 - 11.15 Break

11.15 - 12.15 High-throughput behavioral science using virtual labs by guest speaker Abdullah Almaatouq (SICSS 2017)

12.15 - 12.30 Logistics

12.30 - 1.30 Lunch

Afternoon off!

Time Schedule

Monday 05.08

Tuesday 06.08

9.00 - 9.15 Logistics

9.00 - 12.30 Work on Group Projects

9.15 - 10.30 Speed-dating and group formation

12.30 - 1.30 Lunch

12.30 - 1.30 Lunch

1.30 - 3.00 Guest lecture.

1.30 - 3.00 Guest lecture.

Martijn Schoonvelde

Milena Tsvetkova

Text Analysis and Political Rhetoric

Combining *In Vitro* with *In Cilico* Social Research

Politicians deliver speeches on a day-to-day basis. These speeches are a great resource to learn about all the politics that happens in between elections. They may serve as a testing ground for new policy ideas, drive the media agenda and influence the public. What is more, they may give researchers access to political leaders who are otherwise difficult to reach.

Prof. Tsvetkova will talk about her work on the emergence of cooperation, segregation, and inequality in social groups that exemplifies how empirical data from behavioral experiments and simulation results from agent based models can inform each other. Agent based models can be used to make testable empirical predictions, while empirical data can be used to specify, calibrate, validate, and test models.

In this talk I will discuss the potential and challenges of analyzing political rhetoric using computational methods. Themes concern the promise of machine translation, causal inference and the drivers of political rhetoric.

Time Schedule

Work on Group Projects - Wednesday 07.08

9.00 - 12.30 Work on Group Projects

12.30 - 1.30 Lunch

1.30 - 3.00 Work on Group Projects

The Organizer, the Teaching Assistant as well as the Student Assistant are around the building during the group projects days. See the pages for General Informations if you seek for help.

Presenting Group Projects - Thursday 08.08

9.00 - 12.30 Presenting Group Projects

12.30 - 1.30 Lunch

1.30 - 1.30 Presenting Group Projects

6.00 - 7.30 Closing Dinner

During the group project days, participants are allowed to use either the seminar rooms in FG1 or the lab rooms in the Rechenzentrum (RZ).

Friday 09.08

Participants' Depart

Participant List

A

Aleksandra Urman University of Bern
Communications/Journalism

Alexander Brand University of Bamberg
Sociology

Andrea Hasenkopf University of Bamberg
Political Science

C

Christopher Schmidt University of Bamberg
Sociology

D

Daniel Mayerhoffer University of Bamberg
Political Science

E

Endre Borbáth FU, WZB Berlin
Political Science

F

Florian Gilberg University Duisburg-Essen
Political Science

Franziska Weeber University of Konstanz
Data Science

I

Indira Sen GESIS, University of Koblenz
Computer Science

J

Jannis Denecke University of Konstanz
Psychology

Johannes Geiger University of Essex
Political Science

Julia Leschke LSE, London
Political Science

Participant List

L

- Lea Cohausz** University of Mannheim
Data Science
- Leonie Julia Geyer** University of Bamberg
Political Science
- Liane Rothenberger** Technische Universität Ilmenau
Communications/Journalism
- Lucas Sage** Sorbonne Université, University of Trento
Sociology

M

- Manuel Kleinert** University of Giessen
Sociology
- Marc Luettecke** University of Konstanz
Data Science
- Meng Chen** Webster Vienna Private University
Communications/Journalism
- Muhamma Qasim Pasta** Usman Institute of Technology
Computer Science

N

- Nourhan Elsayed** University of Mannheim
Political Science

S

- Sophie Hornheber** University of Mannheim
Sociology
- Stephan Simon** University of Bamberg
Political Science
- Susanne Freund** University of Eichstätt-Ingolstadt
Psychology

The Bamberg Graduate School of Social Sciences

The Bamberg Graduate School of Social Sciences was established in 2010 to create an innovative working and learning environment for exceptionally qualified doctoral researchers.

In the disciplines of Sociology, Political Science, Psychology and Educational Science, the Graduate School fosters and promotes the next generation of researchers in their methodologically oriented studies.

As a multidisciplinary Graduate School, the Bamberg Graduate School of Social Sciences offers a structured programme of training and education for doctoral researchers in the Faculties of Social Sciences, Economics, Business Administration and Human Sciences. While firmly anchored in one academic discipline, doctoral students are encouraged to search for innovative solutions to their research problems beyond the confines of a single subject. A tailored and flexible doctoral training in courses on the frontiers of subject-specific knowledge, on research methods and on professional skills supports doctoral students who aim for international excellence both in their aspirations and in their work.

Summer Schools such as SICSS are the result of a course programme that is personalized and based on an individual assessment of its students' prior education and research needs. This Individual Research Training Plan (IRTP) will be elaborated throughout the different doctoral stages in coordination with the supervisor and the management of the Graduate School.

Students striving to achieve a PhD have the possibility to apply for either a regular or an associate membership. Prospective associate doctoral students (i.e. self-funded, e.g. by a position as a Research Assistant at the University of Bamberg or other local research institutes) are usually already enrolled as doctoral candidates at the University of Bamberg. They may, for example, be employed as lecturers or researchers, work on their thesis part-time or receive a scholarship from another institution, but do not receive funding from BAGSS. Candidates need to find a supervisor from the BAGSS faculty when applying for an associate membership.

Current regular doctoral students are full-time researchers funded either by BAGSS and the Excellence Initiative or by an external institution (e.g. the DAAD, other bodies funding doctoral studies based on academic excellence). Furthermore, there is also the possibility to apply for a post-doc membership to gain the opportunity for funding.

The Bamberg Graduate School of Social Sciences

Doctoral Training:

- Close personal supervision by three professors
- Modern, individual and flexible course programme
- Methodological and theoretical courses
- Participation in Joint-Workshops or events with affiliated institutions in Bamberg (LifBi, TraC, Partner Universities etc.)

Research Areas

- A1: Education, Personal Development and Learning from Early Childhood to Adulthood
- A2: Educational and Social Inequality Across the Entire Life Course
- A3: Changes in Human Capital, Labour Markets and Demographic Structures and their Impact on Social Structures in Modern Societies
- A4: Governance, Institutional Change and Political Behavior

Support

- Research and travel support
- Dedicated office space & IT equipment

Preparation for the Job Market

- Workshops in transferable and professional skills
- Teaching opportunities
- Higher education didactics
- Career development workshops

For further information about our Graduate School, please visit the website or follow us on Twitter and Facebook!

Web:

www.uni-bamberg.de/bagss

Twitter:

@BAGSS5

Facebook:

@bagssbamberg



General Information

Refreshment Breaks

In the morning and afternoon breaks, coffee, soft drinks and small snacks, e.g. pretzels, small cakes are offered in the hallway in front of room FG 1/00.06 and 00.08

Lunch Breaks

For lunch, we recommend visiting the university's cafeteria or mensa. On workdays the mensa is open from 11.30 to 14.30. Throughout SICSS, we will provide you with a Guest Card that is already loaded with 80 €. The Guest Card is your primary way of paying at the cafeteria or mensa. In case the preload is spent, you can top up the card at one of the card automates inside the mensa.

Wi-Fi

You will also have free Wi-Fi access at the University of Bamberg. In general, you have many hotspots that support @BayernWLAN, which is a free Wi-Fi service provided by the Bundesland of Bavaria.

Working Space

If you look for a quiet space to check your e-mails or similar, feel free to use the working space at FG 1 room 00.06 (across the kitchen). Please note that we don't lock the door or keep a watch, so make sure to leave no valuables in the room.

Public Transportation

The most frequent bus connections from SICSS to the city centre are the lines 901, 907, 915 and 931. They leave from either Feldkirchenstraße or Kloster-Banz-Straße and stop at the train station, Luitpoldstraße and at the central bus station (ZOB).

Bus tickets are available from the bus driver. The single fare is EUR 1.90. Alternatively, you could get a multi-trip ticket for four trips which costs EUR 6.50. Please note that you have to pay in cash at the bus driver's. For bus schedules check www.vgn.de or aks on the reception.

Further Questions?

For all further questions, please refer to our student assistants or the organizers. They will be available to support you throughout the workshop. SICSS Office is located in FG 1/01.06

Notice of Photography

Photographs will be taken during the Summer Institute. The photographs will be used by the Bamberg Graduate School of Social Sciences for the purpose of promoting its activities and may be published on its website, social media channels and in other promotional materials for the graduate school. If you do not wish to appear in the photographs, please inform our photographer Madalena dos Reis Goncalves (marketing.bagss@uni-bamberg.de).

SICSS Rooms

Lecture Room: FG 1/00.08

Seminar Room: FG 1/00.06

Additional Seminar Rooms: RZ

SICSS Office: FG 1/01.06

Consultation and Office Hours: FG 1/01.09

Opening hours:

Mensa - hot food:

Mon - Fri: 11.30 - 14.00

Cafeteria - cold food, coffee:

Mon-Thu: 08.00-15.00

Fri: 08.00 - 14.30

University Library:

Mon- Fri: 08.30 - 24.00

Sat - Sun: 10.00 - 20.00

Connect with us:

FACEBOOK



Bamberg
Graduate
School
of Social
Sciences

TWITTER



@BAGSSS

LOCAL MAP

Bus stop
Feldkirchenstraße
Busses 907, 914
to train station /
city center **depart**
from here



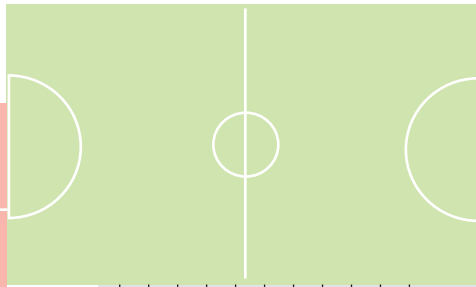
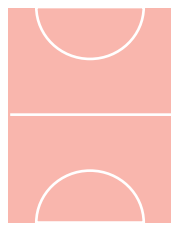
Memmeldorfer Straße



Bus stop
Feldkirchenstraße
Busses 907, 914
from
train station / city
center **arrive** here

Feldkirchenstraße

Am Heidelsteig



Parking Space

FG2

BAGSS

FG1 00.08

Side entrance

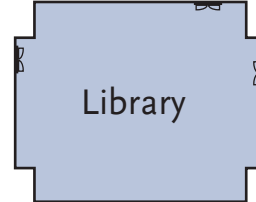


FMA

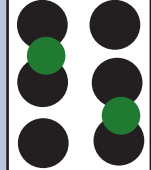
F21

RZ

Main entrance



Library



Mensa / Cafeteria



Bus stop
Universität
Bus 931 to train
station / city
center **departs**
from here

PUBLISHER

Bamberg Graduate
School of Social
Sciences,
University of Bamberg
Thomas Saalfeld

**WORKSHOP CONCEPT
AND ORGANIZATION**

Carsten Schwemmer
Julian Hohner
Thomas Saalfeld

WORKSHOP DESIGN

Julian Hohner &
Carsten Schwemmer

EDITOR

Julian Hohner &
Carsten Schwemmer

ASSISTANTS

Jonas Reißmann
Johannes von Dorrien

COPYRIGHT

All rights reserved. No part of the
contents of this brochure may be
reproduced or transmitted in any form
or by any means without the written
permission of the publisher.

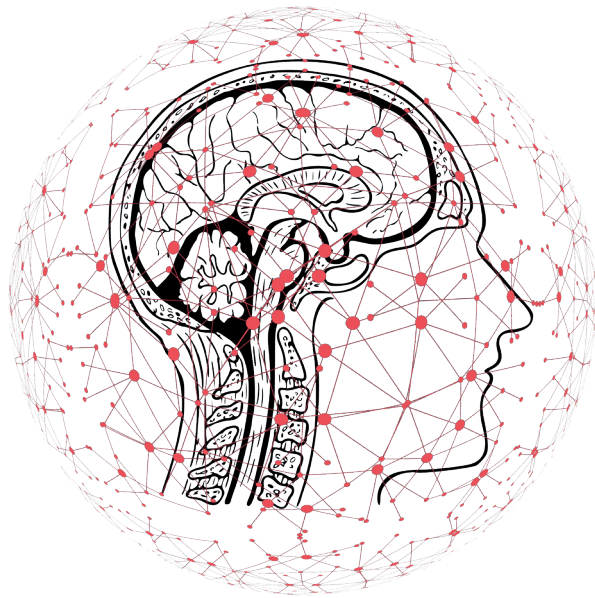
PRINT

Printed and bound in Bamberg,
Germany, K. Urlaub GmbH

BAMBERG / GERMANY. MAY 2019.

BAMBERG
GRADUATE SCHOOL
OF SOCIAL SCIENCES





BAMBERG
GRADUATE SCHOOL
OF SOCIAL SCIENCES

